

# eastport

## Modern A

### Living Areas

Ground Floor	51.2 m <sup>2</sup>
First Floor	78.6 m <sup>2</sup>
Garage	38.4 m <sup>2</sup>
Porch	4.7 m <sup>2</sup>
Patio	6.3 m <sup>2</sup>

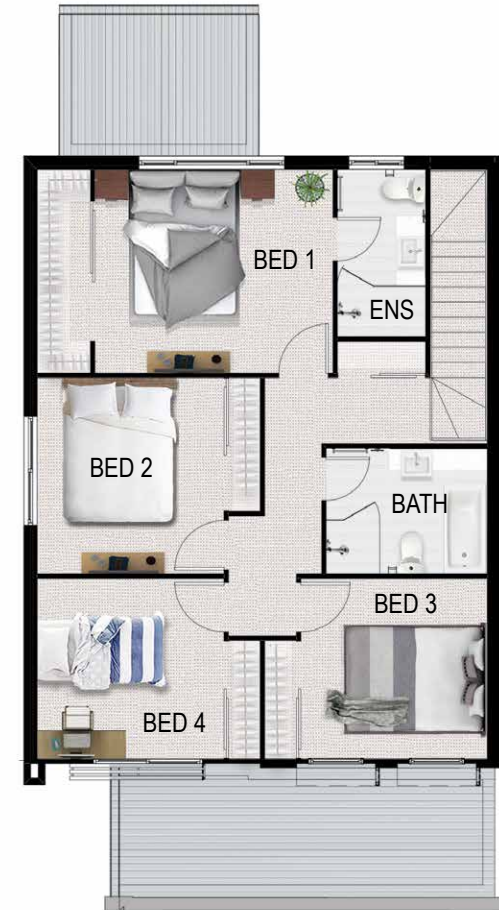
**Total** 179.2 m<sup>2</sup>

### Features

- 4 Bedrooms
- Bathrooms + Ensuite
- Ground Floor WC
- Double Garage
- Open Plan Living
- Modern Fixtures & Fittings
- Fully Fenced Courtyard



GROUND FLOOR



FIRST FLOOR