

Townhome Style

Northport HIP

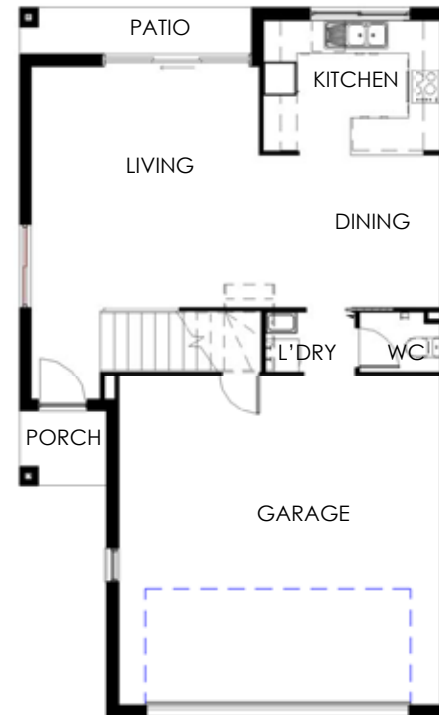


Areas:

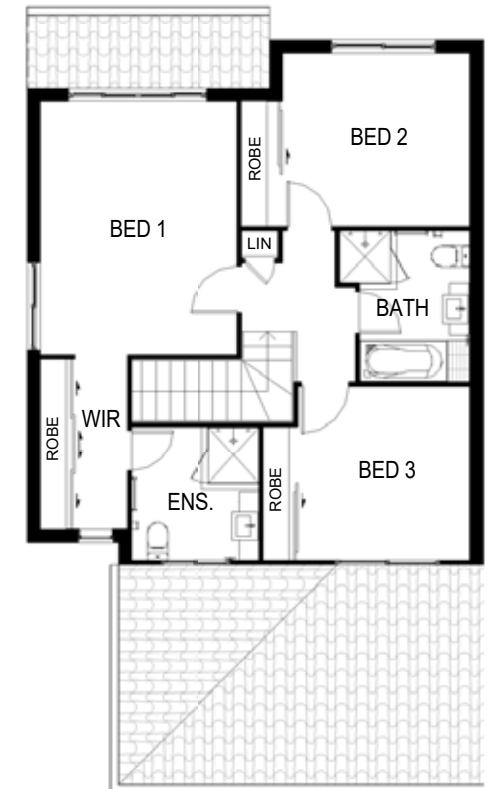
Ground Level:	50.0 m ²
First Level:	67.0 m ²
Total Living:	117.0 m²
Garage:	38.6 m ²
Porch:	2.1 m ²
Patio:	3.5 m ²
GRAND TOTAL:	161.2 m²

Features:

- Two Storey Townhome
- Three Bedrooms
- Two and a half Bathrooms
- Double Lock Up Garage
- Spacious open plan living
- Master Bedroom with Ensuite



GROUND FLOOR



FIRST FLOOR