

An architectural rendering of a modern townhome complex at dusk. The townhomes are two stories high with a mix of light grey and dark grey horizontal siding. They have flat roofs with wide overhangs. Several windows are visible, some with white frames. In front of the townhomes is a paved area with a pattern of dark and light grey bricks. There are three trees with pink blossoms in the foreground. A black metal fence runs along the front of the property. The sky is a mix of blue and orange, suggesting sunset or sunrise. The overall lighting is soft and warm.

LEXINGTON

TOWNHOMES



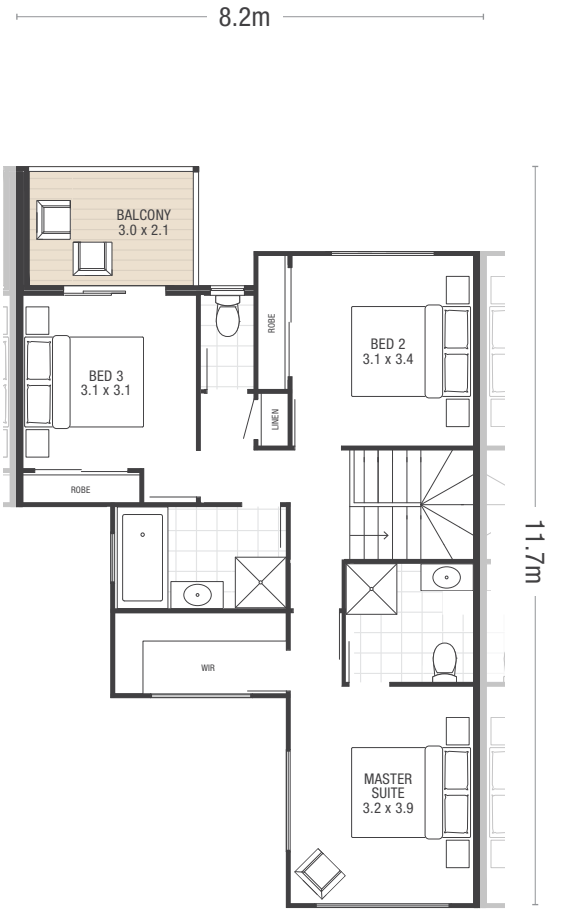
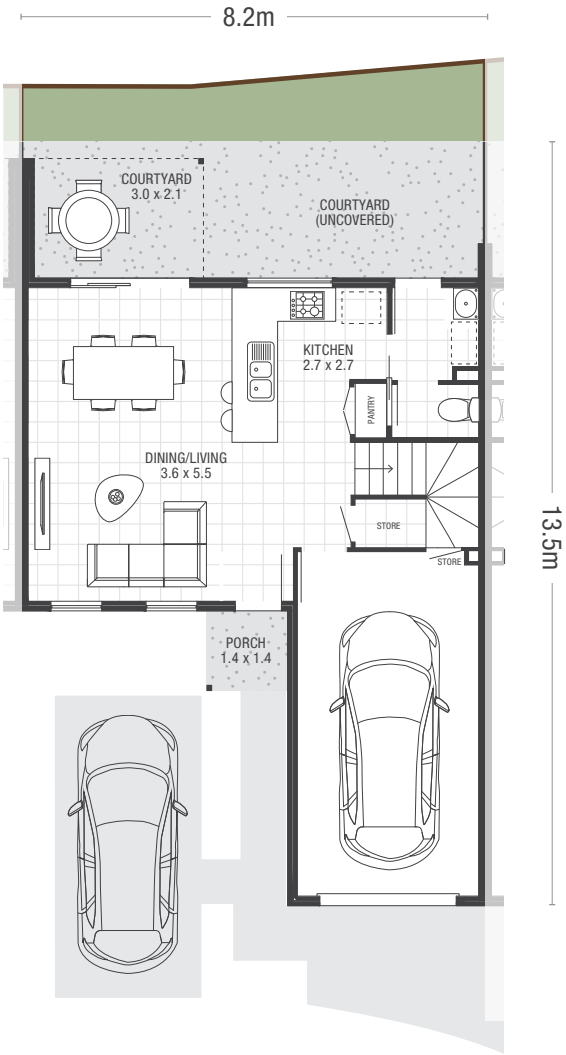
TOWNHOME 48 · \$485,000

 3 |  2½ |  2 |  1

HOME MEASUREMENTS · TYPE M2B		
Ground Floor	4.8sq	44.3m ²
First Floor	7.5sq	69.3m ²
Garage	2.4sq	21.8m ²
Porch	0.2sq	2.0m ²
Courtyard	0.7sq	6.8m ²
Balcony	0.7sq	6.8m ²
Total Home Area	16.3sq	151.0m²
Private Green Space	0.9sq	8.2m ²
Courtyard (uncovered)	1.4sq	12.8m ²
Path, Driveway and Parking	2.6sq	24.0m ²
Total Exclusive Use Area	4.8sq	45.0m²

This home features a single car lockup garage, 3 generous bedrooms, 2 spacious bathrooms, including 1 bath, and a convenient ground floor powder room, all finished tastefully with high quality fixtures complemented by a palette of crisp bright interiors and fresh earthy tones.

This townhome is both a beautiful home and a wise investment.





**INVEST IN
LEXINGTON TODAY**

ARTIST IMPRESSION