



# Townhome Style

## Ashmore Modern Quad

### Areas:

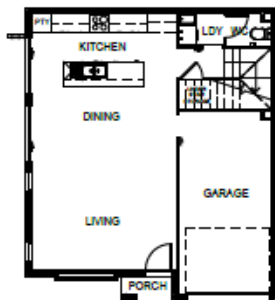
Internal Living Area: 114.4m<sup>2</sup>  
Garage: 21.6m<sup>2</sup>

Covered Outdoor Area: 1.3m<sup>2</sup>

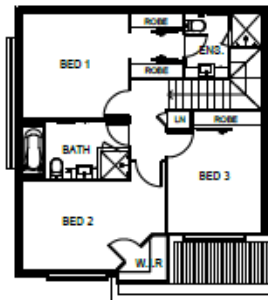
Total: 137.3m<sup>2</sup>

### Features:

- Two storey townhome
- Three bedrooms
- Bathroom and ensuite
- Ground floor powder room
- Single lock up garage
- Spacious open plan living
- Ample storage



GROUND FLOOR



FIRST FLOOR



\*Standard design shown. Actual colour, facade and floor plans may differ between units.