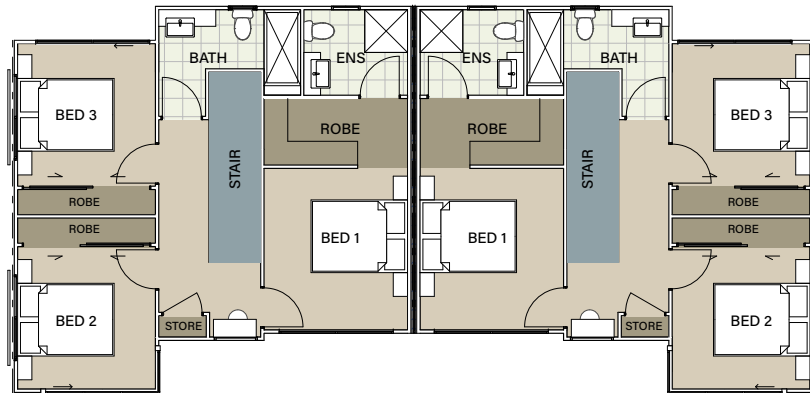


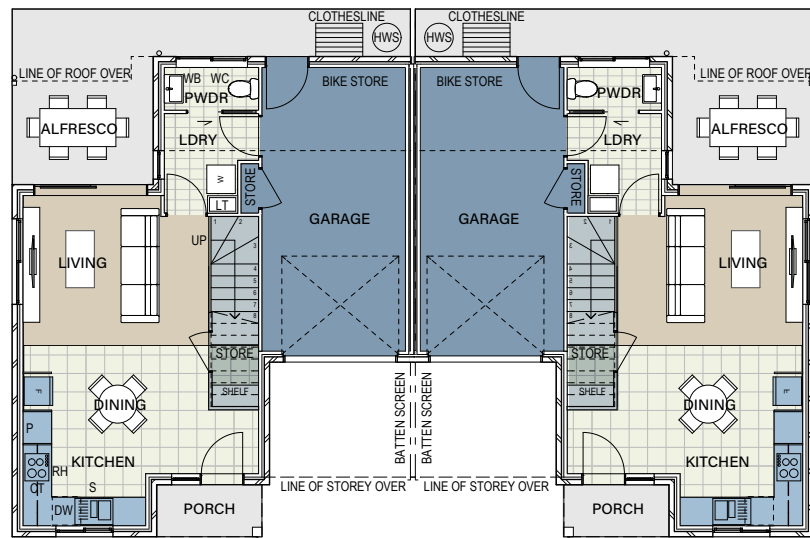
Unit Type A
Ground Floor



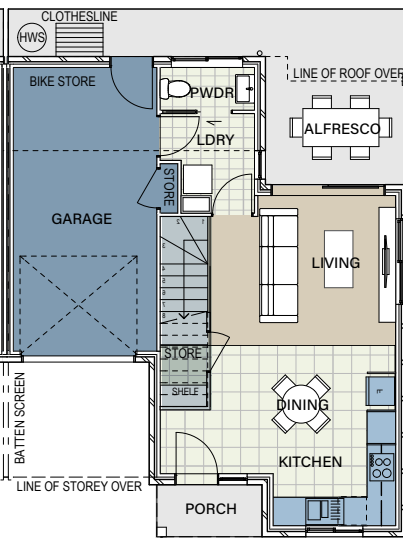
Unit Type A2
Ground Floor



Unit Type A
First Floor



Unit Type A2
First Floor



KITCHEN

- Caesarstone kitchen bench tops (or equivalent).
- Gloss laminate external doors & gable ends.
- Melamine internal linings.
- Overhead cupboard fixtures on walls
- Selected door and tap hardware.
- 1 ½ bowl stainless steel sink.
- Electric wall oven, cooktop, range hood & dishwasher.
- Minimum 450mm high tiled splashback above bench tops.
- Stainless Steel appliances.

BATHROOMS AND VANITIES

- Laminated vanity cupboard & top.
- Chrome towels rails.
- Chrome toilet roll holders.
- Chrome soap holders in all showers.
- Chrome framed shower screens.
- Chrome framed mirrors.
- Tiled to 1800mm high in showers, 450mm behind baths, skirt tile elsewhere.

ELECTRICAL

- All units to be Foxtel ready, lounge & main bedroom.

INTERNAL

- A/C split system to living area on ground floor.
- Variable speed ceiling fans to all bedrooms.
- Metal laundry cupboard with by-pass.
- Floors – tiles to wet areas, kitchen & front entry, carpet to balance.
- Timber hand rail with stainless steel brackets.
- Vertical blinds to all windows and doors, excluding opaque panels.

LINEN CUPBOARD

- 4 shelves Timber laminate.

WARDROBES

- Aluminium framed vinyl sliding door robes, 1 mirror, 1 vinyl.
- Fit 1 shelf full width (timber laminate) and hanging rail.
- 1 x 4 draw bank or shelves to each robe of timber laminate.