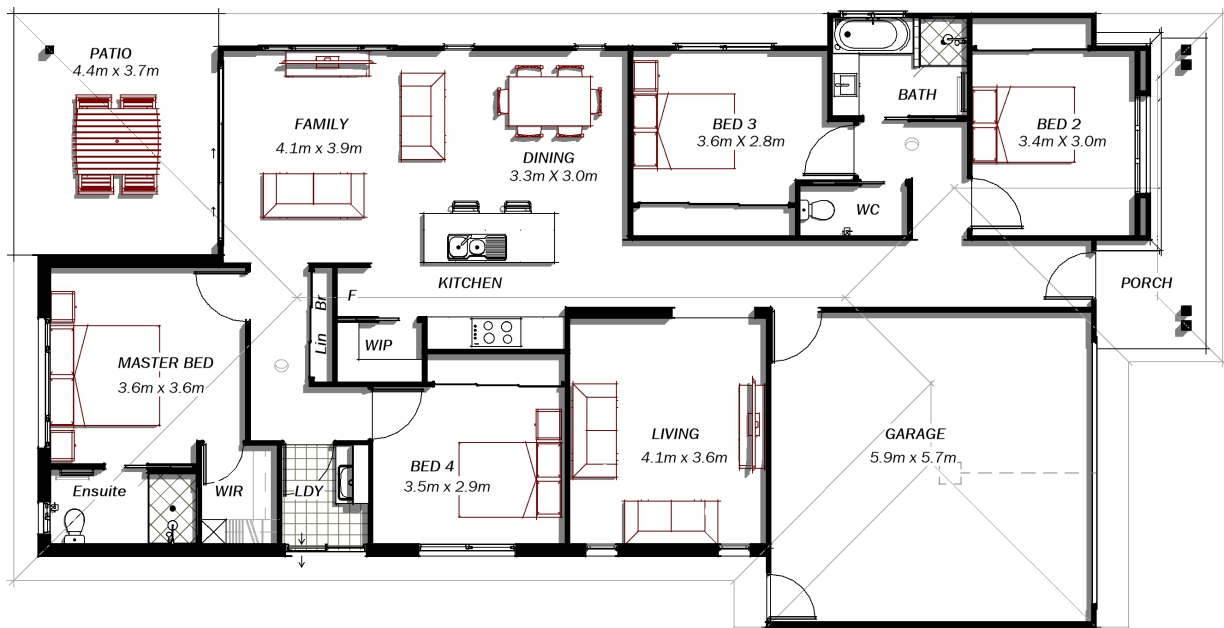




Soho 12



- 4 Bedrooms with Built-in Robes
- Ensuite & WIR to Master Bedroom
- Two Living areas
- Open Plan - Kitchen/ Family/ Dining
- Modern Kitchen with Breakfast Bar

- Separate Laundry
- Double Garage with Internal Entry
- Covered Alfresco Patio
- Landscaped Fully Fenced Yard

- 208.08m²
- 22.40sq
- 11m frontage