

TOWNHOUSE

TOTAL PACKAGE
\$432,500



Illustrations are an artists impression only.

Unit 1 Jotown Drive, Roswell Terraces, Coomera

3 2.5 2

HIGH SET DESIGN - TURN KEY COMPLETE.

Building: A1

Yard: 41.73m²

TOWNHOUSE SIZE

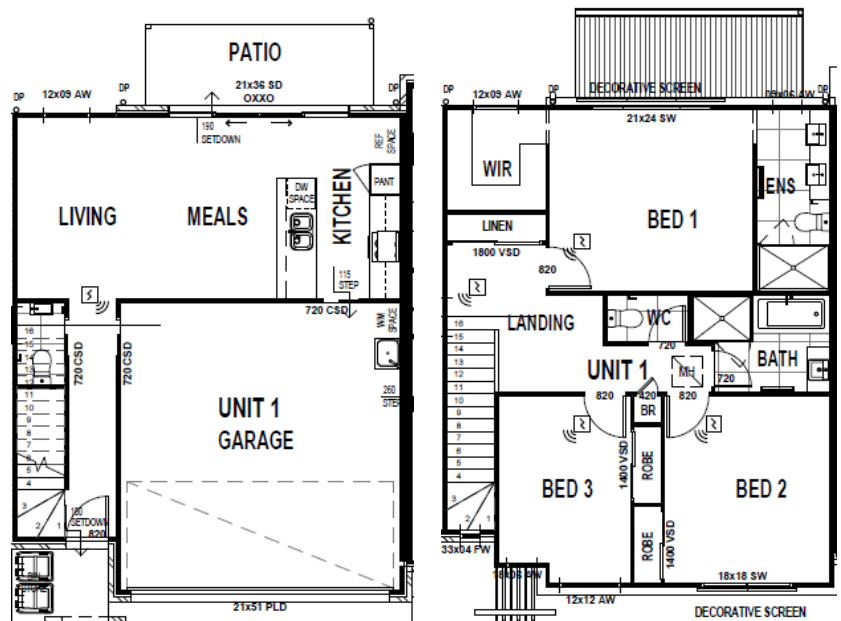
Ground floor: 75.49 m²

First floor: 72.52 m²

Patio: 7.20 m²

Total size: 155.21 m²

- Completion estimated June 2018
- Estimated rent: \$410 p/w
- Body Corp. approx. \$20 p/w
- Study Nook
- Downstairs powder room
- Stone bench tops in Kitchen and bathroom vanities
- Quality Stainless steel appliances
- Undercover outdoor dining
- Air-conditioning to Living and Master
- Master Bedroom with ensuite and Walk-in-robe
- Main bathroom with separate toilet
- Fans throughout
- Fly Screens to all windows
- Vertical blinds throughout
- Landscaping – Turf & garden beds
- Walking distance to Coomera East Shopping Centre.



Disclaimer: The builder reserves the right to alter the plan, specifications, materials, suppliers and price without notification. Furniture and furnishings depicted are not included with any sale. Whilst all care is taken to provide the information as accurately as possible, the purchasers should read and understand the specific plans, development information and contract documents and seek and rely on their own advice.